

Bollard 300

with PURE LED

PROJECT:

TYPE:

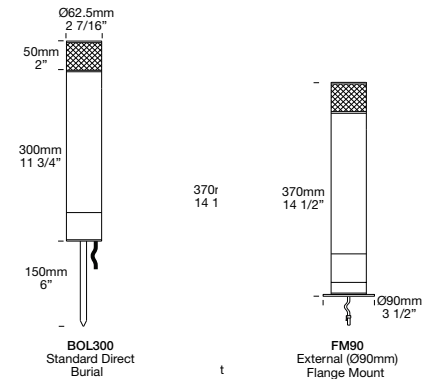
SOURCE:

NOTES:

SPECIFICATIONS



LED Chip	Cree XHP-50-2 Plug and Play field replaceable LED board
Luminaire Output*	510 Lumens @ 1050mA (6 watts), 340 Lumens @ 700mA (4 watts), 160 Lumens @ 350mA (2 watts)
Lumens Per Watt*	85 Lumens @ 6 watts minimum
LED Life Expectancy	50,000 hours L70
CRI (3000K)	90+
Colour Temperatures	2700K, 3000K, 4000K
Beam Angle	360°
Ingress Protection	IP56 / IP66
Warranty	Electronics = 5 years Aluminium = 5 years Body Cop/ SS = 10 years
Standards	AS/NZS 61046 cUL 1838, 2108 CE



*Delivered from the Luminaire with unobstructed beam

PRODUCT CONFIGURATION

[Click here for 240v Remote Power Supply Guidance Charts](#)
[Click here for USA Remote Power Supply Guidance Charts](#)

Cat. No. BOL300/L

Luminaire	Power	Material/Finish	Beam	Colour	Accessories
BOL300/L					
S	1050mA Input, Series Wired 6W	ALUMINIUM	EBK BLACK	360 360°	2 2700K
D3	12VAC Input, Parallel Wired 2W		EBZ BRONZE		3 3000K
D7	12VAC Input, Parallel Wired 4W		EOGR OLIVE GREEN		4 4000K
D10	12VAC Input, Parallel Wired 6W		EGWH WHITE		
D24	24VDC Input, Parallel Wired		EWB WHITE BIRCH		
			EDG DARK GREY		
			ESTAR SILVER STAR		
			ECT CORTEN		
			COP Copper		
			SS Stainless Steel		
S - Series Driver Power Supply: Constant current driver REQUIRED - NOT SUPPLIED Wiring Method: Wired in series Fixture Input: Individual fixtures require 6Vf @ 1050mA maximum 6 Watts D3 D7 D10 - 12VAC Input Power Supply: Line/Mains to 12VAC Transformer REQUIRED - NOT SUPPLIED Wiring Method: Parallel Fixture Input: 9-15VAC, D3 = 6Vf @ 350mA 2W D7 = 6Vf @ 700mA 4W D10 = 6Vf @ 1050mA 6W (1050mA limited to ≤ 40°C (104°F) ambient temperature in stainless steel) D24 - 24VDC Driver Fixture Input: 24VDC (driver included) Fixture Output: 6Vf 700mA 4W constant current (non-dimming)					
OTHER LAMP OPTIONS: BOL300/H - MR16 Halogen 12V Lamp BOL300/SL - MR16 LED Retrofit 12V Lamp (lamps vary by market - please refer to supplier for details) BOL300/GUH - GU10 120/240V Halogen Lamp (body length increases for all GU10 lamps) BOL300/GUSL - GU10 LED Retrofit 120/240V Lamp (lamps vary by market - please refer to supplier for details)					
ADDITIONAL COMMENTS:					
Accessories: BOLOP Opaque Lens HOOD140C Hood 140mm Contoured HOOD140S Hood 140mm Smooth GSBOL Glazer Shield *reduces beam angle to 180° FM Flange Mount FM90 External Flange Mount 90 EP Electro Polish *Only available for Stainless Steel					

*Due to continued product enhancements, specifications may change without notification.

LUMINAIRE CONSTRUCTION

CNC machined from one of the following metals:

Aluminium:

Body: High corrosion resistant 63.5mm (2½") x 10mm (3/8") aluminium
Pole: 63.5mm (2½") aluminium
End Cap: Solid aluminium 63.5mm (2½") rod, with chromate substrate and high UV resistant polyester powder coat
Colours: Black, Bronze, Silver Star, White, White Birch, Olive Green, Dark Grey, Corten

Copper:

Body: 63.5mm (2½") x 10mm (3/8")
Pole: Solid copper 63.5mm (2½")
End cap: solid copper 63.5mm (2½") rod

316 Stainless Steel:

Body: 63.5mm (2½") x 10mm (3/8")
Pole: 316 stainless steel 63.5mm (2½")
End cap: Solid 316 stainless steel 63.5mm (2½") rod

Anti-Glare Hood:

140mm (5½") x 1.2mm (1/16") handspun aluminium, copper or stainless steel. No upward light or glare projected.

Lens:

UV stable polycarbonate lens with anti-glare mesh and dual reflector projects light horizontally and at 45° onto the ground.

Gaskets:

Silicone, iron impregnated 220°C (428°F)

Mounting:

Set in concrete in the ground or specify with flange mount option, which bolts to concrete, tiling or wooden decks.

Luminaire Weight:

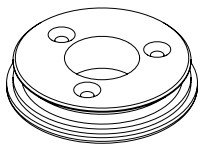
Alum: 0.870kg (1lb 15oz)

Cop: 2.290kg (5lb 1oz)

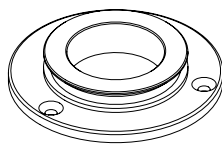
SS: 2.170kg (4lb 13oz)



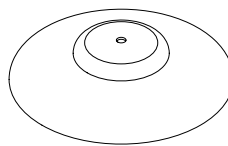
ACCESSORIES



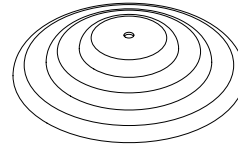
Flange Mount



Flange Mount 90mm



Hood 140mm
Smooth

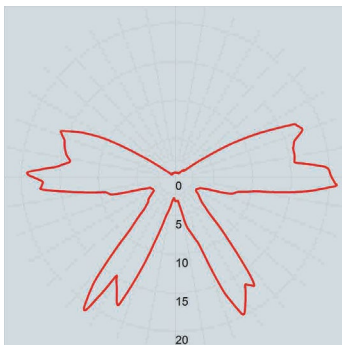


Hood 140mm
Contoured

BEAM ANGLES

High efficiency PMMA TIR lenses. Field replaceable

IES files available for download: hunzalighting.com/downloads



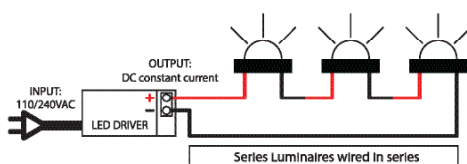
360° FWHM

WIRING GUIDE

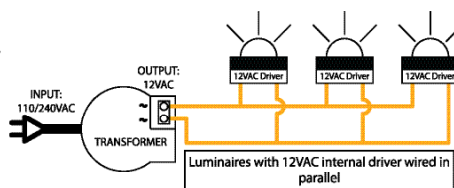
Available for download: hunzalighting.com/downloads

NOTE: Diagrams are a guide only, wire colours and polarity may change depending on fixture and country.

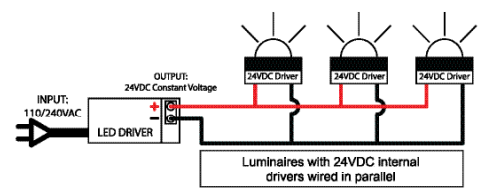
Series/Remote Driver



12VAC Integral Driver



24VDC Driver



*Due to continued product enhancements, specifications may change without notification.

HUNZA™

HUNZA LIGHTING
130 Felton Mathew Ave
Saint Johns
Auckland 1072
New Zealand

Ph: +64-9-528-9471
hunza@hunza.co.nz
www.hunzalighting.com

INTERNATIONAL CONTACTS:
www.hunzalighting.com/contact

This document contains proprietary information of Hunza™. Its receipt or possession does not convey any rights to reproduce or disclose its content.