

Soffit downlights



Soffit downlights

Bring your landscape lighting scheme to your door

Soffit lights allow you to tie your lighting scheme from the building to the landscaping.

IP65 front and back

The H2 Pro Extreme is IP65 from the front and the back making it perfect for soffits and other outdoor installations. Where most IP65 downlights would fail due to moisture getting in through the back of the product the H2 Pro Extreme thrives being completely protected at an IP65 rating.

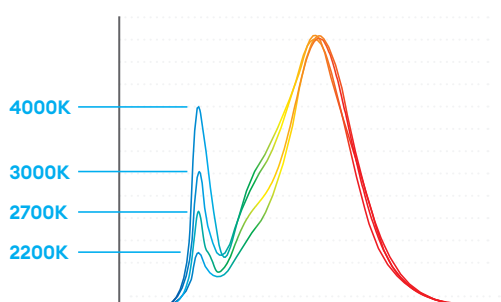


Warmer light

2200K **Ember** light

Minimising the blue light content of outdoor lighting is key to improving the survival and growth rates of nocturnal animals.

That's why Collingwood is introducing outdoor lighting with 2200K. The amount of blue light in 2200K is significantly less than 4000K or even 3000K.



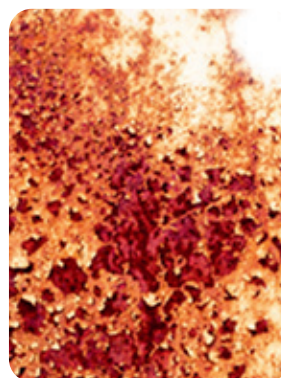
Coastal protection

Rust & salt mist protection

With corrosion resistant protection and coastal protective paint, H2 Pro Extreme CSP are perfect for use in coastal areas.

Advantages

- Feel confident you can install our products anywhere.
- Can be installed into coastal areas without any worry of products failing.



Colour Switchable Product

One light, three colour temperatures

Always have the correct product on hand. Our range of colour switchable downlights are available to stock in 3 colour temperatures in 1 product (2200K, 2700K, 3000K).

Advantages

- Simpler product range.
- Products can be adjusted after they are installed.

2200K



2700K



3000K





H2 Pro Extreme CSP

IP65 (above+below) downlight suitable for installing outdoor in building soffits and canopies

Features

IP rating	IP65 (from below and above)
CSP switchable	Switchable CCT
Tiltable	No
UGR	22
Dimmable option	Yes (Mains)
Input	220-240V AC
LED lifetime	L70 40,000h
Colour rendering Index	CRI>80
Colour consistency	SDCM4
Emergency option	No

Installation information

Install connector type	Flying lead
Insulation coverable	No
Cut out size (mm)	65-75
Bathroom zone	1 (ceiling only)
Inrush current	2.3A 0.06ms
Construction material	Aluminium / Plastic
Maximum ceiling thickness	30 mm
Weight	148g
Maximum ambient temperature	-20°C - 40°C
SELV	Yes
Building regulations	Part C, P & L
Ceiling joist approvals	No
Electric class (1, 2, 3)	2

Photometrics @ 25°C

Product code	Feature	Finish	W	CCT	Beam angle	lm	lm/W	Energy
H2EXT1A	Switchable CCT	Anthracite grey RAL7016	5W	2200K	40°	480	96	
				2700K	40°	570	114	
				3000K	40°	560	112	
H2EXT1B	Switchable CCT	Black	5W	2200K	40°	480	96	
				2700K	40°	570	114	
				3000K	40°	560	112	
H2EXT1W	Switchable CCT	White	5W	2200K	40°	480	96	
				2700K	40°	570	114	
				3000K	40°	560	112	

Energy rating is a reflection of the LED light source.

Wiring information

Cable / flying lead	0.37m H03VVH2-F 2x0.75mm ²
Cable required for connector	N/A
Type of wiring required	Parallel

Accessories

DM298GRID	Grid Dimmer	Sold Separately
DM298FP	Flatplate Dimmer	Sold Separately
PCELLKIT	Wall Mounted Photocell Kit	Sold Separately

Soffit Downlights

IP65 IP65 from above and below for total protection

Suitable for use in coastal applications

New 2200K to minimise effects of blue light

Guarantee

4 years

Features & benefits

Use 2700K to illuminate materials such as wooden fences, sand or red brick to highlight warm tones

Select 2200K to minimise the effects blue light content has on nocturnal animals to help survival and growth rates

Collingwood Switchable Product

TRIAC mains dimmable suitable for leading and trailing edge dimmers

Integrated corrosion protected bezel

Pair with dusk to dawn sensor PCELL kit to bring on when dark and off when light

Beam angle: 40°

